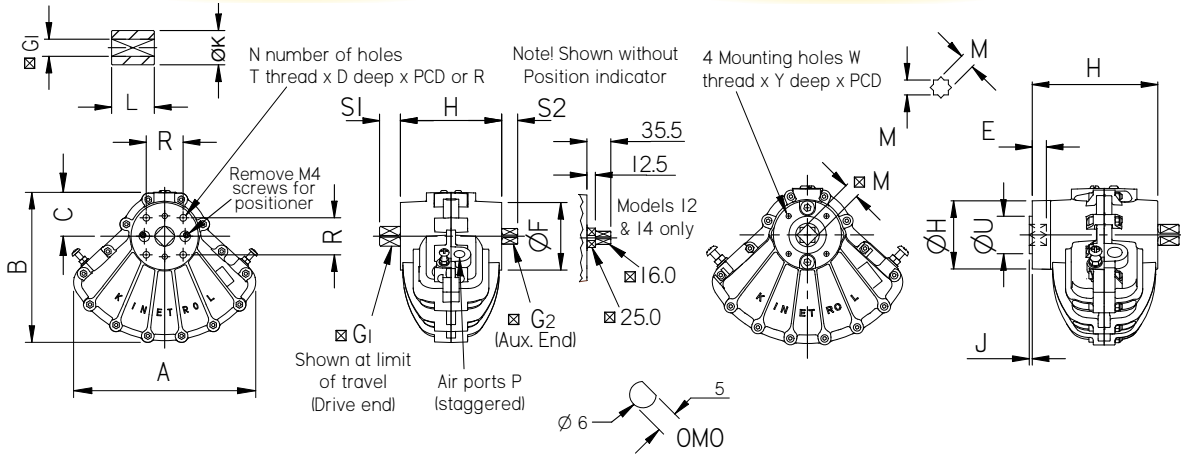


Standard Actuator

DIN/ISO Options



Actuator Metric Units

| Actuator Model | A mm | B mm | C mm | G1 mm | G2 mm | H mm | ØF mm | S1 mm | S2 mm | N No. | T ISO | D mm | R mm | PCD mm | P ISO | ØK mm | L mm | Wt kg |
|----------------|-------|-------|-------|-----------|-------|-------|-------|-------|-------|-------|-------|----------------------|-------------------------------|--------|-------------------------------|-------|-------|-------|
| OMO | 32.0 | 30.7 | 12.5 | SEE ABOVE | | 36.0 | 22.0 | 10.0 | 10.0 | 4 | M3 | 5.0 | - | 16.0** | M5 | - | - | 0.12 |
| 014 | 72.0 | 59.2 | 14.0 | 4.8 | 4.8 | 38.0 | 26.0 | 12.7* | 7.0 | 4 | M4 | 6.0 | - | 19.0** | G ¹ / ₈ | 9.5 | 12.7 | 0.29 |
| 014P | 73.5 | 60.0 | 14.0 | 4.8 | 4.8 | 38.0 | 26.0 | 12.7* | 7.0 | 4 | Ø4.2 | UNIQUE MOUNTING CRS. | G ¹ / ₈ | | | 9.5 | 12.7 | 0.35 |
| 024 | 91.0 | 76.0 | 24.1 | 8.0 | 8.0 | 50.0 | 29.0 | 10.0 | 10.0 | 4 | M4 | 8.0 | 18.0 | 25.5 | G ¹ / ₈ | 16.0 | 20.0 | 0.46 |
| 034 | 113.0 | 91.4 | 28.0 | 9.0 | 9.0 | 60.0 | 33.6 | 12.0 | 12.0 | 4 | M5 | 10.0 | 22.0 | 31.1 | G ¹ / ₈ | 18.0 | 22.0 | 0.73 |
| 054 | 137.0 | 113.0 | 33.6 | 9.5 | 9.5 | 67.0 | 45.0 | 13.0 | 13.0 | 6 | M5 | 10.0 | - | 34.9 | G ¹ / ₈ | 19.0 | 25.4 | 1.28 |
| 074 | 178.0 | 146.0 | 43.4 | 16.0 | 16.0 | 100.0 | 64.0 | 20.0 | 20.0 | 4 | M8 | 16.0 | 36.0 | 50.9 | G ¹ / ₄ | 32.0 | 40.0 | 3.30 |
| 084 | 208.5 | 167.0 | 46.3 | 17.0 | 16.0 | 110.0 | 65.0 | 19.0 | 20.0 | 4 | M8 | 16.0 | 49.5 | 70.0 | G ¹ / ₄ | 36.0 | 42.0 | 2.78 |
| 094 | 227.0 | 187.0 | 54.7 | 19.0 | 16.0 | 126.0 | 84.0 | 26.0 | 20.0 | 4 | M10 | 20.0 | 46.0 | 65.0 | G ¹ / ₄ | 38.0 | 50.0 | 3.83 |
| 124 | 294.0 | 239.0 | 68.0 | 25.0 | 16.0 | 156.0 | 100.0 | 31.0 | 35.5 | 4 | M12 | 24.0 | 55.0 | 77.8 | G ³ / ₈ | 50.0 | 56.0 | 7.50 |
| 144 | 380.0 | 308.0 | 84.0 | 28.6 | 16.0 | 200.0 | 128.0 | 38.0 | 35.5 | 4 | M16 | 28.0 | 69.9 | 98.8 | G ¹ / ₂ | 57.0 | 63.5 | 14.10 |
| 164 | 530.0 | 427.0 | 125.0 | 41.0 | 41.0 | 274.0 | 175.0 | 55.0 | 55.0 | 4 | M24 | 38.0 | 108.0 | 152.7 | G ¹ / ₂ | 85.0 | 90.0 | 39.77 |
| 184 | 680.0 | 554.0 | 162.0 | 57.0 | 57.0 | 360.0 | 286.0 | 78.0 | 78.0 | 4 | M30 | 50.0 | 160.0 | 226.3 | G ³ / ₄ | 115.0 | 130.0 | 77.60 |
| 204 | 680.0 | 554.0 | 162.0 | 73.0 | 73.0 | 620.0 | 286.0 | 100.0 | 100.0 | 8 | M30 | 50.0 | 160.0 | 226.3 | G1 | 150.0 | 170.0 | 211.0 |
| 304 | 680.0 | 554.0 | 162.0 | 73.0 | 73.0 | 880.0 | 286.0 | 100.0 | 100.0 | 8 | M30 | 50.0 | 160.0 | 226.3 | G1 | 150.0 | 170.0 | 288.4 |

* INCLUDES PLAIN SHAFT Ø6.35 x 8 LONG

** HOLES ON CENTRE LINES

Actuator English Units

| Actuator Model | A inch | B inch | C inch | G1 inch | G2 inch | H inch | ØF inch | S1 inch | S2 inch | N No. | T UNC | D inch | R inch | PCD inch | P NPT | ØK inch | L inch | Wt lb † |
|----------------|--------|--------|--------|-----------|---------|--------|---------|---------|---------|-------|----------------------------------|----------------------|-----------------------------|----------|-----------------------------|---------|--------|---------|
| OMO | 1.26 | 1.21 | 0.49 | SEE ABOVE | | 1.42 | 0.87 | 0.39 | 0.39 | 4 | M3 | 0.20 | 0.390 | 0.630 | M5 | - | - | 0.26 |
| 017 | 2.83 | 2.33 | 0.55 | 0.187 | 0.19 | 1.50 | 1.02 | 0.50* | 0.28 | 4 | 8-32 | 0.24 | - | 0.750 | ¹ / ₈ | 0.37 | 0.50 | 0.63 |
| 017P | 2.89 | 2.36 | 0.55 | 0.187 | 0.19 | 1.50 | 1.02 | 0.50* | 0.28 | 4 | Ø0.17 | UNIQUE MOUNTING CRS. | ¹ / ₈ | | | 0.37 | 0.50 | 0.78 |
| 027 | 3.58 | 3.00 | 0.95 | 0.315 | 0.32 | 1.97 | 1.14 | 0.39 | 0.39 | 4 | 8-32 | 0.31 | 0.709 | 1.000 | ¹ / ₈ | 0.63 | 0.79 | 1.01 |
| 037 | 4.45 | 3.60 | 1.10 | 0.354 | 0.35 | 2.36 | 1.32 | 0.47 | 0.47 | 4 | 10-24 | 0.39 | 0.866 | 1.225 | ¹ / ₈ | 0.71 | 0.87 | 1.61 |
| 057 | 5.39 | 4.41 | 1.32 | 0.375 | 0.37 | 2.64 | 1.77 | 0.51 | 0.51 | 6 | 10-24 | 0.39 | - | 1.375 | ¹ / ₈ | 0.75 | 1.00 | 2.82 |
| 077 | 7.01 | 5.75 | 1.71 | 0.630 | 0.63 | 3.94 | 2.52 | 0.79 | 0.79 | 4 | ⁵ / ₁₆ -18 | 0.63 | 1.417 | 2.000 | ¹ / ₄ | 1.26 | 1.57 | 7.26 |
| 087 | 8.21 | 6.57 | 1.82 | 0.669 | 0.63 | 4.33 | 2.56 | 0.75 | 0.79 | 4 | ⁵ / ₁₆ -18 | 0.63 | 1.949 | 2.756 | ¹ / ₄ | 1.42 | 1.65 | 6.10 |
| 097 | 8.94 | 7.36 | 2.16 | 0.748 | 0.63 | 4.96 | 3.31 | 1.02 | 0.79 | 4 | ³ / ₈ -16 | 0.79 | 1.811 | 2.560 | ¹ / ₄ | 1.50 | 1.97 | 8.44 |
| 107 # | 9.06 | 7.42 | 2.28 | 0.866 | 0.63 | 6.89 | - | 0.94 | 0.79 | 4 | ³ / ₈ -16 | 0.63 | 2.839 | 4.016 | ¹ / ₄ | - | - | 21.12 |
| 127 | 11.57 | 9.41 | 2.68 | 0.984 | 0.63 | 6.14 | 3.94 | 1.22 | 1.40 | 4 | ¹ / ₂ -13 | 0.94 | 2.165 | 3.060 | ³ / ₈ | 1.97 | 2.20 | 16.50 |
| 147 | 14.96 | 12.13 | 3.31 | 1.125 | 0.63 | 7.87 | 5.00 | 1.50 | 1.40 | 4 | ⁵ / ₈ -11 | 1.10 | 2.750 | 3.890 | ¹ / ₂ | 2.24 | 2.50 | 31.10 |
| 167 | 20.87 | 16.81 | 4.92 | 1.614 | 1.61 | 10.79 | 6.90 | 2.17 | 2.17 | 4 | ⁷ / ₈ -9 | 1.50 | 4.250 | 6.010 | ¹ / ₂ | 3.35 | 3.54 | 87.49 |
| 187 | 26.77 | 21.81 | 6.38 | 2.244 | 2.24 | 14.17 | 11.26 | 3.07 | 3.07 | 4 | 1 ¹ / ₈ -7 | 1.97 | 6.300 | 8.910 | ³ / ₄ | 4.53 | 5.12 | 170.7 |
| 207 | 26.77 | 21.81 | 6.38 | 2.874 | 2.87 | 24.41 | 11.26 | 3.94 | 3.94 | 8 | 1 ¹ / ₈ -7 | 1.97 | 6.300 | 8.910 | 1 | 5.91 | 6.69 | 464.2 |
| 307 | 26.77 | 21.81 | 6.38 | 2.874 | 2.87 | 34.65 | 11.26 | 3.94 | 3.94 | 8 | 1 ¹ / ₈ -7 | 1.97 | 6.300 | 8.910 | 1 | 5.91 | 6.69 | 634.5 |

FEMALE DRIVE

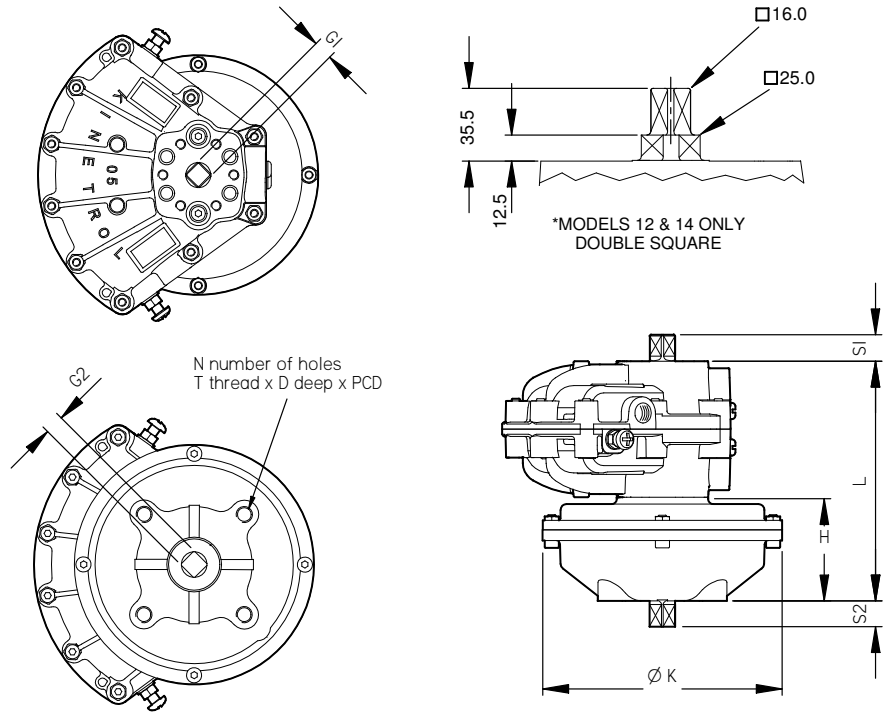
† All weights include couplina - except 107

DIN/ISO Options

| Actuator Model | A mm | B mm | C mm | H mm | ØF mm | DIN/ISO flange no. | M mm | V mm | U mm | PCD mm | W mm | Y(min) mm | J mm | E mm | P Port | G2 mm | S2 mm |
|----------------|-------|-------|-------|-------|-------|--------------------|------|------|------|--------|------|-----------|------|------|-------------------------------|-------|-------|
| 023 | 91.0 | 76.0 | 24.1 | 66.0 | 29.0 | F03 | 9 | 46 | 25 | 36 | M5 | 8 | 2 | 10 | G ¹ / ₈ | 8.0 | 10.0 |
| 033 | 113.0 | 91.4 | 28.0 | 74.0 | 33.6 | F03 | 9 | 46 | 25 | 36 | M5 | 8 | 2 | 10 | G ¹ / ₈ | 9.0 | 12.0 |
| 053 | 137.0 | 113.0 | 33.6 | 81.0 | 45.0 | F04 | 11 | 54 | 30 | 42 | M5 | 8 | 2 | 12 | G ¹ / ₈ | 9.5 | 13.0 |
| 073 | 178.0 | 146.0 | 43.4 | 117.0 | 64.0 | F05 | 14 | 64 | 35 | 50 | M6 | 10 | 3 | 16 | G ¹ / ₄ | 16.0 | 20.0 |
| 093 | 227.0 | 187.0 | 54.7 | 146.0 | 84.0 | F07 | 17 | 90 | 55 | 70 | M8 | 13 | 3 | 19 | G ¹ / ₄ | 16.0 | 20.0 |
| 103 | 230.0 | 188.5 | 58.0 | 175.0 | - | F10 | 22 | - | 70 | 102 | M10 | 16 | 3 | 24 | G ¹ / ₄ | 16.0 | 20.0 |
| 123 | 294.0 | 239.0 | 68.0 | 180.5 | 100.0 | F10 | 22 | 125 | 70 | 102 | M10 | 16 | 3 | 24 | G ³ / ₈ | 16.0 | 35.5 |
| 143 | 380.0 | 308.0 | 84.0 | 226.5 | 127.0 | F12 | 27 | 150 | 85 | 125 | M12 | 20 | 3 | 29 | G ¹ / ₂ | 16.0 | 35.5 |
| 163 | 525.0 | 427.0 | 125.0 | 380.0 | 175.0 | F16 | 46 | 203 | 130 | 165 | M20 | 32 | 4 | 48 | G ¹ / ₂ | 41.0 | 55.0 |



ISO Flange Male Spring Return Actuator Dimensions



Metric Units

| Actuator** Model | L mm | H mm | ØK mm | ⊠ G1 mm | ⊠ G2 mm | S1 mm | S2 mm | N No. | T ISO | D mm | PCD mm | Wt Kg |
|------------------|--------|-------|-------|---------|---------|-------|-------|-------|-------|------|--------|-------|
| 024-120 | 90.0 | 40.0 | 73.0 | 8.0 | 8.0 | 10.0 | 10.0 | 4 | M4 | 8.0 | 25.5 | 0.84 |
| 034-120 | 107.0 | 47.0 | 107.0 | 9.0 | 9.0 | 12.0 | 12.0 | 4 | M5 | 10.0 | 31.1 | 2.08 |
| 054-120 | 117.0 | 50.0 | 118.0 | 9.5 | 9.5 | 13.0 | 13.0 | 6 | M5 | 8.0 | 34.9 | 2.63 |
| 074-120 | 182.0 | 82.0 | 152.0 | 16.0 | 16.0 | 20.0 | 20.0 | 4 | M8 | 16.0 | 50.9 | 7.26 |
| 084-120 | 197.0 | 87.0 | 174.0 | 16.0 | 17.0 | 20.0 | 19.0 | 4 | M8 | 16.0 | 70.0 | 7.23 |
| 094-120 | 218.0 | 92.0 | 200.0 | 16.0 | 19.0 | 20.0 | 26.0 | 4 | M10 | 20.0 | 65.0 | 12.15 |
| 104-120 | 285.0 | 112.0 | 206.0 | 16.0 | 22.0 | 35.5 | 26.0 | 4 | M10 | 16.0 | 102.0 | 22.00 |
| 124-120 | 293.0 | 136.0 | 258.0 | 16.0* | 25.0 | 35.5 | 31.0 | 4 | M12 | 22.0 | 77.8 | 27.95 |
| 144-120-4900 | 417.0 | 217.0 | 258.0 | 16.0* | 28.6 | 35.5 | 38.0 | 4 | M16 | 28.5 | 98.8 | 51.81 |
| 144-120 | 374.0 | 174.0 | 394.0 | 16.0* | 28.6 | 35.5 | 38.0 | 4 | M16 | 28.5 | 98.8 | 71.25 |
| 144-120-5000 | 337.0 | 137.0 | 258.0 | 16.0* | 28.6 | 35.5 | 38.0 | 4 | M16 | 28.5 | 98.8 | 38.18 |
| 164-120-6100 | 450.0 | 176.0 | 394.0 | 41.0 | 41.0 | 55.0 | 55.0 | 4 | M24 | 32.0 | 152.7 | 75.00 |
| 164-120 | 485.5 | 211.5 | 524.0 | 41.0 | 41.0 | 55.0 | 55.0 | 4 | M24 | 38.0 | 152.7 | 123.0 |
| 184-120-7000 | 571.5 | 211.5 | 524.0 | 57.0 | 57.0 | 78.0 | 78.0 | 4 | M30 | 50.0 | 226.3 | 161.0 |
| 184-120 | 671.5 | 311.5 | 524.0 | 57.0 | 57.0 | 78.0 | 78.0 | 4 | M30 | 50.0 | 226.3 | 240.0 |
| 204-120-7200 | 931.5 | 311.5 | 524.0 | 73.0 | 73.0 | 100.0 | 100.0 | 8 | M30 | 50.0 | 226.3 | 350.0 |
| 204-120-7300 | 1031.5 | 411.5 | 524.0 | 73.0 | 73.0 | 100.0 | 100.0 | 8 | M30 | 50.0 | 226.3 | 408.0 |
| 204-120 | 1131.5 | 511.5 | 524.0 | 73.0 | 73.0 | 100.0 | 100.0 | 8 | M30 | 50.0 | 226.3 | 479.0 |
| 304-120-7600 | 1293.0 | 411.5 | 524.0 | 73.0 | 73.0 | 100.0 | 100.0 | 8 | M30 | 50.0 | 226.3 | 524.0 |
| 304-120-7700 | 1393.0 | 511.5 | 524.0 | 73.0 | 73.0 | 100.0 | 100.0 | 8 | M30 | 50.0 | 226.3 | 606.0 |
| 304-120-7800 | 1493.0 | 611.5 | 524.0 | 73.0 | 73.0 | 100.0 | 100.0 | 8 | M30 | 50.0 | 226.3 | 688.0 |
| 304-120 | 1593.0 | 711.5 | 524.0 | 73.0 | 73.0 | 100.0 | 100.0 | 8 | M30 | 50.0 | 226.3 | 770.0 |

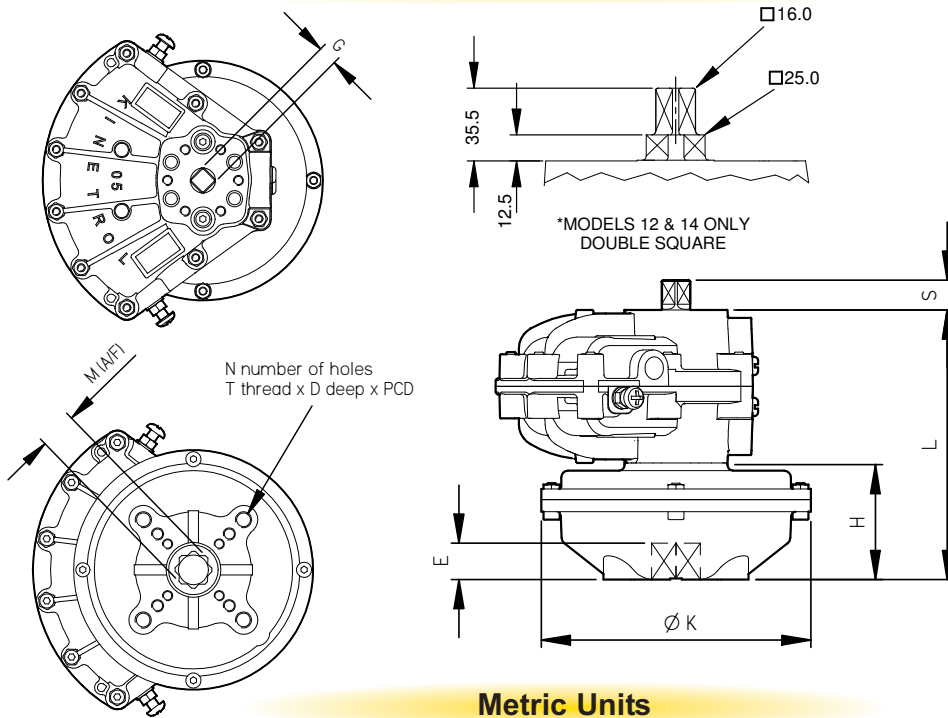
English Units

| Actuator** Model | L inch | H inch | ØK inch | ⊠ G1 inch | ⊠ G2 inch | S1 inch | S2 inch | N No. | T UNC | D inch | PCD inch | Wt lb |
|------------------|--------|--------|---------|-----------|-----------|---------|---------|-------|---------|--------|----------|--------|
| 027-120 | 3.54 | 1.58 | 2.87 | 0.315 | 0.315 | 0.39 | 0.39 | 4 | 8-32 | 0.31 | 1.00 | 1.85 |
| 037-120 | 4.21 | 1.85 | 4.21 | 0.354 | 0.354 | 0.47 | 0.47 | 4 | 10-24 | 0.39 | 1.225 | 4.58 |
| 057-120 | 4.61 | 1.97 | 4.25 | 0.375 | 0.375 | 0.51 | 0.51 | 6 | 10-24 | 0.31 | 1.375 | 5.80 |
| 077-120 | 7.17 | 3.23 | 6.00 | 0.630 | 0.630 | 0.79 | 0.79 | 4 | 5/16-18 | 0.63 | 2.00 | 16.00 |
| 087-120 | 7.76 | 3.43 | 6.85 | 0.630 | 0.669 | 0.79 | 0.75 | 4 | 5/16-18 | 0.63 | 2.76 | 15.93 |
| 097-120 | 8.58 | 3.62 | 7.90 | 0.630 | 0.748 | 0.79 | 1.02 | 4 | 3/8-16 | 0.79 | 2.56 | 26.80 |
| 107-120 | 11.22 | 4.41 | 8.11 | 0.630 | 0.866 | 0.79 | 1.02 | 4 | 3/8-16 | 0.63 | 4.02 | 48.50 |
| 127-120 | 11.54 | 5.35 | 10.16 | 0.630* | 0.984 | 1.40 | 1.22 | 4 | 1/2-13 | 0.87 | 3.06 | 61.62 |
| 147-120-4900 | 16.43 | 8.54 | 10.16 | 0.630* | 1.125 | 1.40 | 1.50 | 4 | 5/8-11 | 1.12 | 3.89 | 113.98 |
| 147-120 | 14.72 | 6.85 | 15.50 | 0.630* | 1.125 | 1.40 | 1.50 | 4 | 5/8-11 | 1.13 | 3.89 | 157.0 |
| 147-120-5000 | 13.27 | 5.40 | 10.16 | 0.630* | 1.125 | 1.40 | 1.50 | 4 | 5/8-11 | 1.13 | 3.89 | 84.19 |
| 167-120-6100 | 17.72 | 6.93 | 15.50 | 1.614 | 1.614 | 2.17 | 2.17 | 4 | 7/8-9 | 1.26 | 6.01 | 165.0 |
| 167-120 | 19.11 | 8.33 | 20.63 | 1.614 | 1.614 | 2.17 | 2.17 | 4 | 7/8-9 | 1.50 | 6.01 | 272.0 |
| 187-120-7000 | 22.50 | 8.33 | 20.63 | 2.244 | 2.244 | 3.07 | 3.07 | 4 | 1 1/8-7 | 1.97 | 8.91 | 356.0 |
| 187-120 | 26.44 | 12.26 | 20.63 | 2.244 | 2.244 | 3.07 | 3.07 | 4 | 1 1/8-7 | 1.97 | 8.91 | 530.0 |
| 207-120-7200 | 36.67 | 12.26 | 20.63 | 2.874 | 2.874 | 3.94 | 3.94 | 8 | 1 1/8-7 | 1.97 | 8.91 | 773.0 |
| 207-120-7300 | 40.61 | 16.20 | 20.63 | 2.874 | 2.874 | 3.94 | 3.94 | 8 | 1 1/8-7 | 1.97 | 8.91 | 901.0 |
| 207-120 | 44.55 | 20.14 | 20.63 | 2.874 | 2.874 | 3.94 | 3.94 | 8 | 1 1/8-7 | 1.97 | 8.91 | 1058.0 |
| 307-120-7600 | 50.91 | 16.20 | 20.63 | 2.874 | 2.874 | 3.94 | 3.94 | 8 | 1 1/8-7 | 1.97 | 8.91 | 1158.0 |
| 307-120-7700 | 54.84 | 20.14 | 20.63 | 2.874 | 2.874 | 3.94 | 3.94 | 8 | 1 1/8-7 | 1.97 | 8.91 | 1339.0 |
| 307-120-7800 | 58.78 | 24.07 | 20.63 | 2.874 | 2.874 | 3.94 | 3.94 | 8 | 1 1/8-7 | 1.97 | 8.91 | 1520.0 |
| 307-120 | 62.72 | 28.01 | 20.63 | 2.874 | 2.874 | 3.94 | 3.94 | 8 | 1 1/8-7 | 1.97 | 8.91 | 1701.0 |

** Clockwise (120) and counterclockwise (130) units have identical dimensions



ISO Flange Female Spring Return Actuator Dimensions

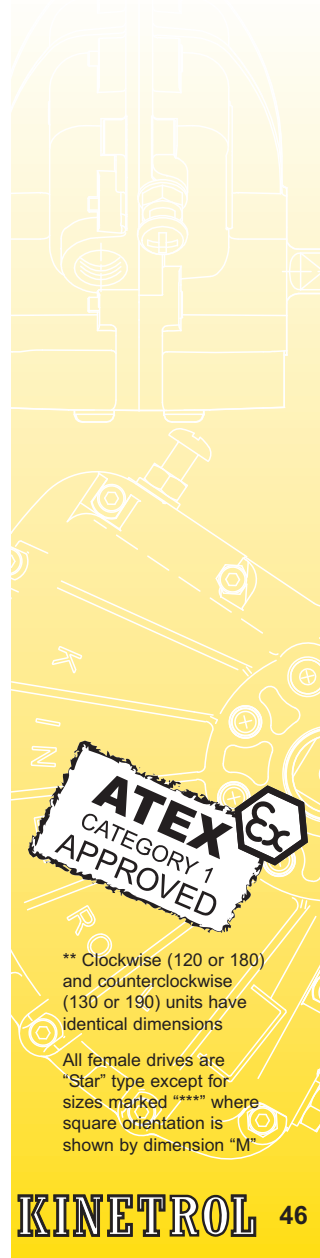


Metric Units

| Actuator** Model | ISO Flange No. | L mm | H mm | ØK mm | M mm | S mm | ⊠ G mm | E mm | N No. | T ISO | D mm | PCD mm |
|------------------|----------------|------|------|-------|------|------|--------|------|-------|----------|----------|----------|
| 033F120 | F03/F05 | 102 | 42 | 107 | 11 | 12 | 9.0 | 12 | 4 | M5/M6 | 8/10 | 36/50 |
| 033F180 | F04 | 102 | 42 | 107 | 11 | 12 | 9.0 | 12 | 4 | M5 | 10 | 42 |
| 053F120 | F03/F05/F07 | 117 | 50 | 118 | 14 | 13 | 9.5 | 16 | 4 | M5/M6/M8 | 10/12/13 | 36/50/70 |
| 053F180 | F04 | 117 | 50 | 118 | 14 | 13 | 9.5 | 16 | 4 | M5 | 10 | 42 |
| 073F120-4000 | F03/F05/F07 | 150 | 50 | 118 | 14 | 20 | 16.0 | 16 | 4 | M5/M6/M8 | 10/12/13 | 36/50/70 |
| 073F120 | F05/F07 | 182 | 82 | 152 | 17 | 20 | 16.0 | 19 | 4 | M6/M8 | 10/13 | 50/70 |
| 083F120 | F07 | 197 | 87 | 174 | 17 | 20 | 16.0 | 19 | 4 | M8 | 16 | 70 |
| 093F120-4200 | F05/F07 | 208 | 82 | 152 | 17 | 20 | 16.0 | 19 | 4 | M6/M8 | 10/13 | 50/70 |
| 093F120 | F07/F10 | 218 | 92 | 200 | 22 | 20 | 16.0 | 24 | 4 | M8/M10 | 13/16 | 70/102 |
| 103F120-5800 | F07/F10 | 265 | 92 | 200 | 22 | 20 | 16.0 | 24 | 4 | M8/M10 | 13/16 | 70/102 |
| 103F120 | F10 | 285 | 112 | 206 | 22 | 20 | 16.0 | 25 | 4 | M10 | 16 | 102 |
| 123F120-4300 | F10 | 248 | 92 | 200 | 22 | 35.5 | 16.0* | 24 | 4 | M10 | 16 | 102 |
| 123F120-4400 | F10 | 340 | 184 | 200 | 22 | 35.5 | 16.0* | 24 | 4 | M10 | 16 | 102 |
| 123F120 | F10 | 293 | 136 | 258 | 22 | 35.5 | 16.0* | 25 | 4 | M10 | 16 | 102 |
| 123F180 | F12 | 293 | 136 | 258 | 22 | 35.5 | 16.0* | 25 | 4 | M12 | 20 | 125 |
| 143F120-4900 | F12 | 417 | 217 | 258 | 27 | 35.5 | 16.0* | 29 | 4 | M12 | 20 | 125 |
| 143F120-5000 | F12 | 337 | 136 | 258 | 22 | 35.5 | 16.0* | 25 | 4 | M12 | 20 | 125 |
| 163F120*** | F14 | 486 | 212 | 524 | 36 | 55 | 41.0 | 38 | 4 | M16 | 24 | 140 |
| 183F120-7000*** | F16 | 572 | 212 | 524 | 46 | 78 | 57.0 | 48 | 4 | M20 | 30 | 165 |
| 183F120*** | F16 | 672 | 312 | 524 | 46 | 78 | 57.0 | 48 | 4 | M20 | 30 | 165 |
| 203F120-7200*** | F25 | 932 | 312 | 524 | 55 | 100 | 73.0 | 57 | 8 | M16 | 24 | 254 |
| 203F120-7300*** | F25 | 1032 | 412 | 524 | 55 | 100 | 73.0 | 57 | 8 | M16 | 24 | 254 |
| 203F120*** | F25 | 1132 | 512 | 524 | 55 | 100 | 73.0 | 57 | 8 | M16 | 24 | 254 |

English Units

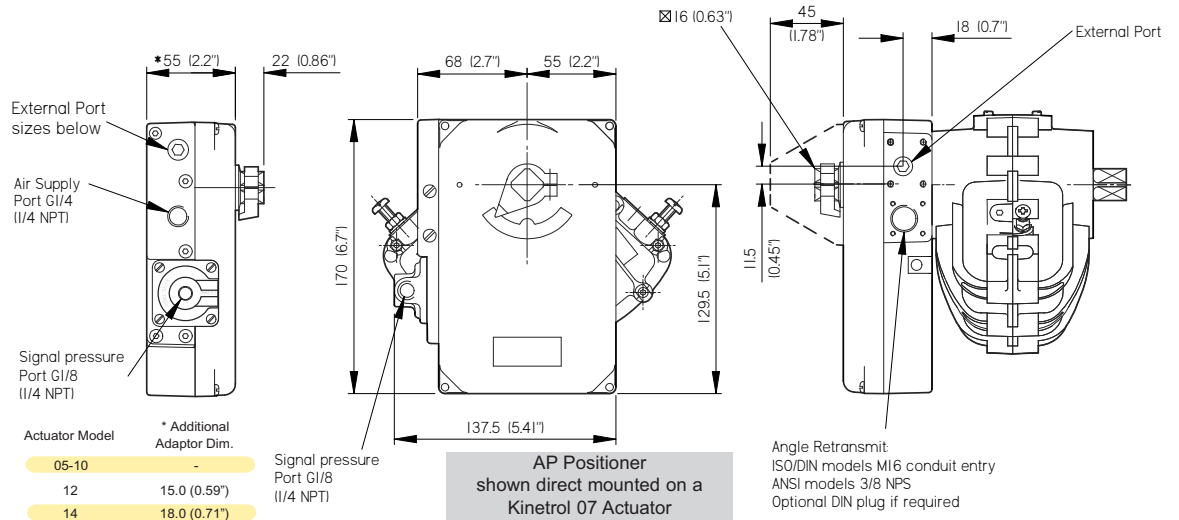
| Actuator** Model | ISO Flange No. | L inch | H inch | ØK inch | M inch | S inch | ⊠ G inch | E inch | N No. | T UNC | D inch | PCD inch |
|------------------|----------------|--------|--------|---------|--------|--------|----------|--------|-------|----------------|----------------|----------------|
| 037F120 | F03/F05 | 4.02 | 1.65 | 4.21 | 0.433 | 0.47 | 0.354 | 0.47 | 4 | 10-24 1/4 | 0.31/0.39 | 1.41/1.97 |
| 037F180 | F04 | 4.02 | 1.65 | 4.21 | 0.433 | 0.47 | 0.354 | 0.47 | 4 | 10-24 | 0.39 | 1.65 |
| 057F120 | F03/F05/F07 | 4.61 | 1.97 | 4.65 | 0.551 | 0.51 | 0.374 | 0.63 | 4 | 10-24 1/4 5/16 | 0.39/0.47/0.51 | 1.42/1.97/2.76 |
| 057F180 | F04 | 4.61 | 1.97 | 4.65 | 0.551 | 0.51 | 0.374 | 0.63 | 4 | 10-24 | 0.39 | 1.65 |
| 077F120-4000 | F03/F05/F07 | 5.91 | 1.97 | 4.65 | 0.551 | 0.79 | 0.630 | 0.63 | 4 | 10-24 1/4 5/16 | 0.39/0.47/0.51 | 1.42/1.97/2.76 |
| 077F120 | F05/F07 | 7.17 | 3.23 | 5.98 | 0.669 | 0.79 | 0.630 | 0.75 | 4 | 1/4 5/16 | 0.39 | 1.97/2.76 |
| 087F120 | F07 | 7.76 | 3.43 | 6.85 | 0.669 | 0.79 | 0.630 | 0.75 | 4 | 5/16 | 0.63 | 2.76 |
| 097F120-4200 | F05/F07 | 8.19 | 3.23 | 5.98 | 0.669 | 0.79 | 0.630 | 0.75 | 4 | 1/4 5/16 | 0.39/0.51 | 1.97/2.76 |
| 097F120 | F07/F10 | 8.58 | 3.62 | 7.87 | 0.866 | 0.79 | 0.630 | 0.94 | 4 | 5/16 3/8 | 0.51/0.63 | 2.76/4.01 |
| 107F120-5800 | F07/F10 | 10.43 | 3.62 | 7.87 | 0.866 | 0.79 | 0.630 | 0.94 | 4 | 5/16 3/8 | 0.51/0.63 | 2.76/4.01 |
| 107F120 | F10 | 11.22 | 4.41 | 8.11 | 0.866 | 0.79 | 0.630 | 0.98 | 4 | 3/8 | 0.63 | 4.02 |
| 127F120-4300 | F10 | 9.76 | 3.62 | 7.87 | 0.866 | 1.40 | 0.630* | 0.94 | 4 | 3/8 | 0.63 | 4.02 |
| 127F120-4400 | F10 | 13.39 | 7.24 | 7.87 | 0.866 | 1.40 | 0.630* | 0.94 | 4 | 3/8 | 0.63 | 4.02 |
| 127F120 | F10 | 11.54 | 5.35 | 10.16 | 0.866 | 1.40 | 0.630* | 0.98 | 4 | 3/8 | 0.63 | 4.02 |
| 127F180 | F12 | 11.54 | 5.35 | 10.16 | 0.866 | 1.40 | 0.630* | 0.98 | 4 | 1/2 | 0.79 | 4.92 |
| 147F120-4900 | F12 | 16.42 | 8.54 | 10.16 | 1.063 | 1.40 | 0.630* | 1.14 | 4 | 1/2 | 0.79 | 4.92 |
| 147F120-5000 | F12 | 13.27 | 5.35 | 10.16 | 0.866 | 1.40 | 0.630* | 0.98 | 4 | 1/2 | 0.79 | 4.92 |
| 167F120*** | F14 | 19.13 | 8.35 | 20.63 | 1.171 | 2.17 | 1.614 | 1.50 | 4 | 5/8 | 0.94 | 5.51 |
| 187F120-7000*** | F16 | 22.52 | 8.35 | 20.63 | 1.811 | 3.07 | 2.244 | 1.89 | 4 | 3/4 | 1.18 | 6.50 |
| 187F120*** | F16 | 26.46 | 12.28 | 20.63 | 1.811 | 3.07 | 2.244 | 1.89 | 4 | 3/4 | 1.18 | 6.50 |
| 207F120-7200*** | F25 | 36.70 | 12.28 | 20.63 | 2.165 | 3.94 | 2.874 | 2.24 | 8 | 5/8 | 0.94 | 10.00 |
| 207F120-7300*** | F25 | 40.63 | 16.22 | 20.63 | 2.165 | 3.94 | 2.874 | 2.24 | 8 | 5/8 | 0.94 | 10.00 |
| 207F120*** | F25 | 44.57 | 20.16 | 20.63 | 2.165 | 3.94 | 2.874 | 2.24 | 8 | 5/8 | 0.94 | 10.00 |



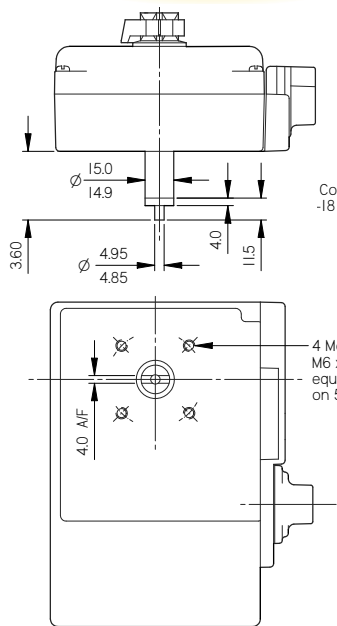
** Clockwise (120 or 180) and counterclockwise (130 or 190) units have identical dimensions

All female drives are "Star" type except for sizes marked "****" where square orientation is shown by dimension "M"

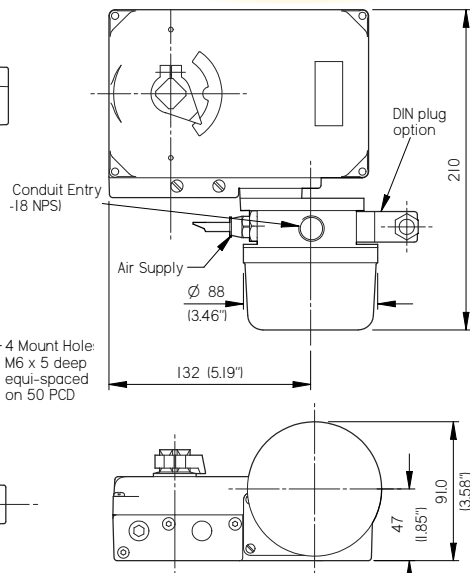
AP Positioner Dimensions



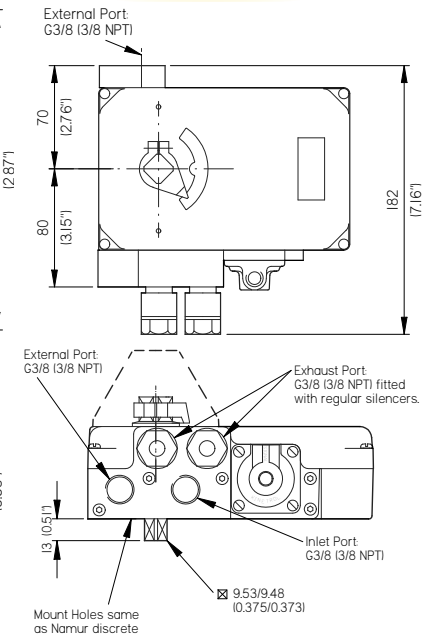
Namur Discrete Version



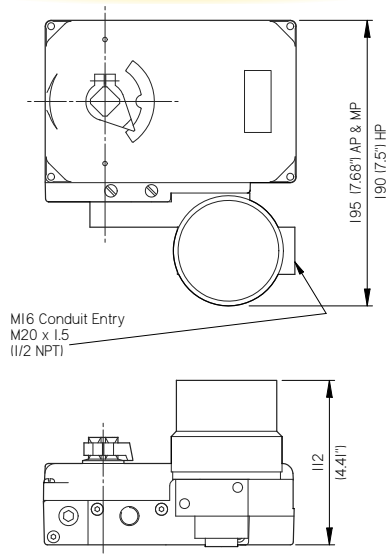
Non-Hazardous I/P Version



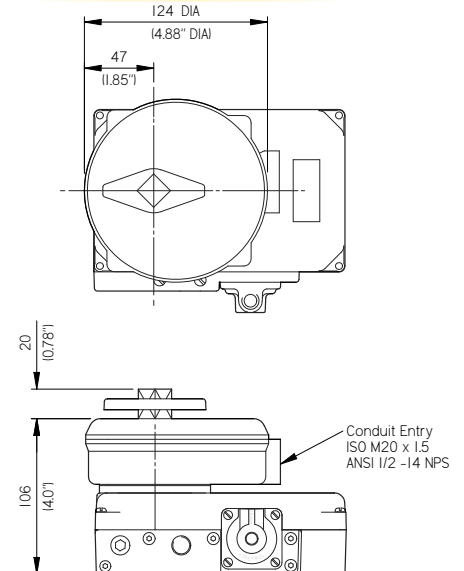
Kinetrol Discrete/ High Flow Version



Explosion Proof I/P Version

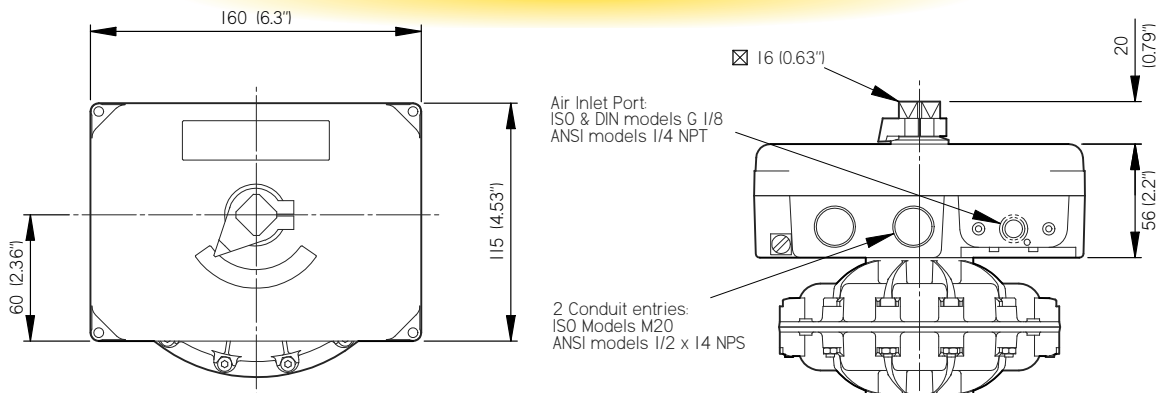


Switch Box Version



Where drawing information is not given - it is the same as the direct mount version

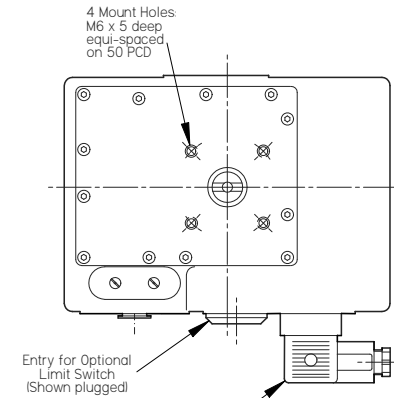
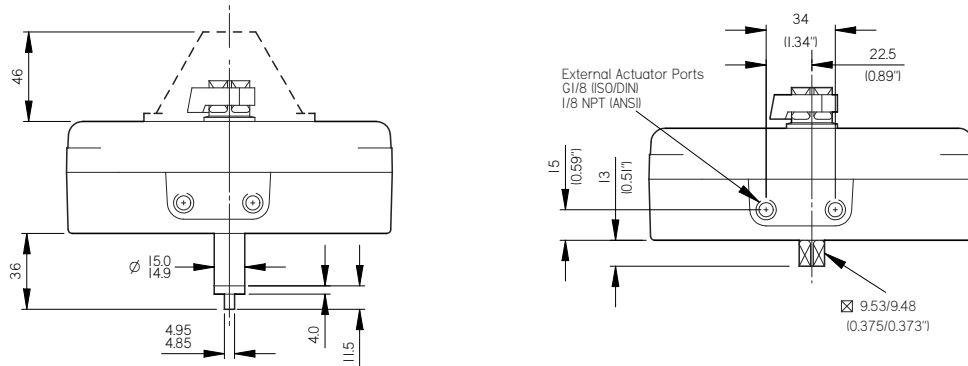
EL Positioner Dimensions



| Actuator Model | * Additional Adaptor Dim. | Additional Adaptor Weight |
|----------------|---------------------------|---------------------------|
| 12 | 15.0 (0.59") | 0.65 kg/1.4 lbs |
| 14 | 18.0 (0.71") | 0.65 kg/1.4 lbs |

Direct Mount Version

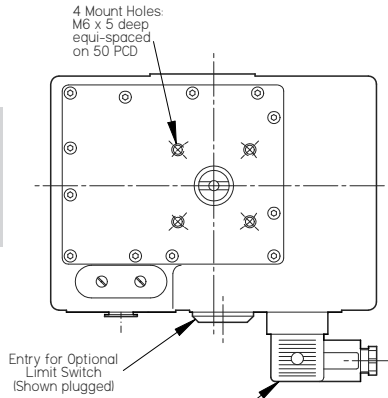
EL Positioner shown direct mounted on a Kinetrol 05 actuator



Namur Discrete Version

Din Plug options - shown 90° out of true position ISO/DIN models cable gland (8 to 10 mm dial ANSI models 1/2 NPT cable entry (for use with flexible conduit).

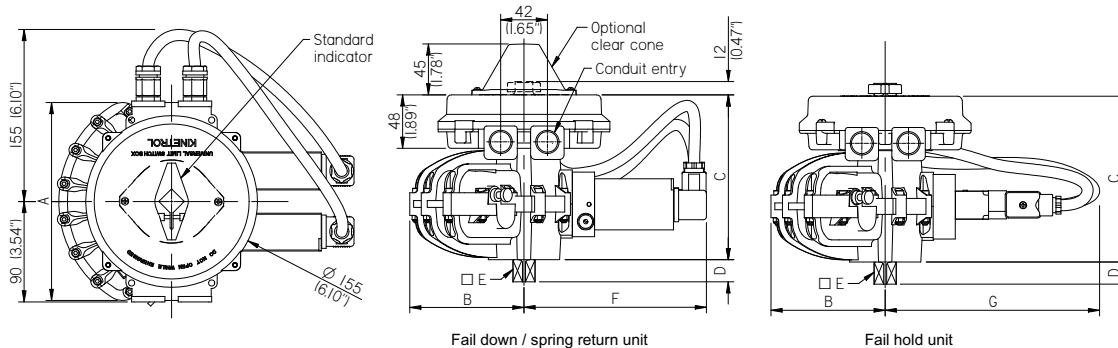
Where drawing information is not given - it is the same for both versions



Kinetrol Discrete Version

Din Plug options - shown 90° out of true position ISO/DIN models cable gland (8 to 10 mm dial ANSI models 1/2 NPT cable entry (for use with flexible conduit).

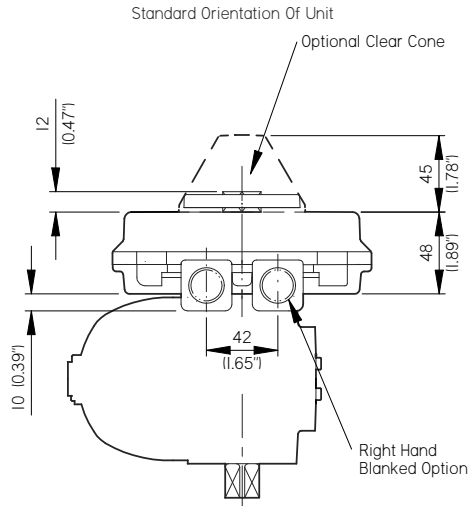
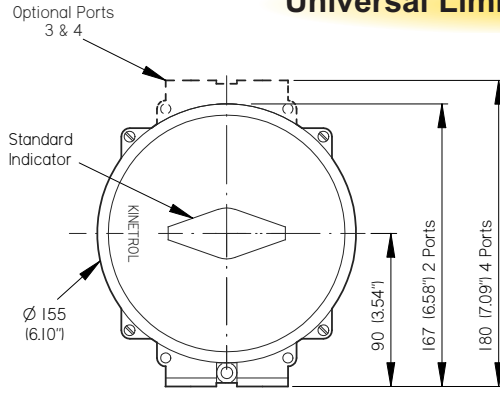
P3 3-Stop Pneumatic Positioner Dimensions



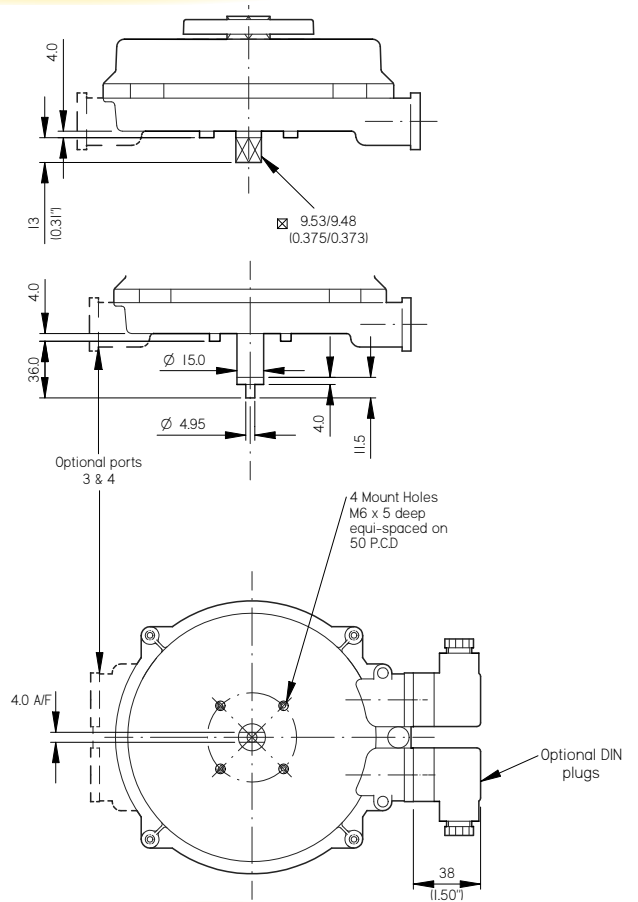
| MODEL | A | B | C | D | E | F | G |
|-------|----------------|---------------|---------------|--------------|---------------|-------------|-------------|
| 05 | 136.0 (5.35") | 78.4 (3.09") | 115.0 (4.53") | 13.0 (0.51") | 9.5 (0.375") | 155 (6.10") | 184 (7.25") |
| 07 | 178.0 (7.01") | 102.6 (4.04") | 148.0 (5.83") | 20.0 (0.79") | 16.0 (0.630") | 164 (6.46") | 193 (7.60") |
| 08 | 179.0 (7.05") | 113.6 (4.47") | 147.0 (5.79") | 19.0 (0.75") | 14.3 (0.562") | 162 (6.38") | 191 (7.52") |
| 09 | 227.0 (8.94") | 132.3 (5.21") | 174.0 (6.85") | 26.0 (1.02") | 19.0 (0.748") | 175 (6.89") | 204 (8.03") |
| 10 | 230.0 (9.06") | 130.5 (5.14") | 223.0 (8.78") | 25.5 (1.00") | 22.0 (0.870") | 179 (7.03") | 207 (8.17") |
| 12 | 294.0 (11.57") | 171.0 (6.73") | 204.0 (8.03") | 31.0 (1.22") | 25.0 (0.984") | 189 (7.44") | 218 (8.58") |
| 14 | 380.0 (14.96") | 222.0 (8.74") | 248.0 (9.76") | 38.0 (1.50") | 28.6 (1.125") | 205 (8.07") | 234 (9.21") |

* Model 10 DIN (F10) female drive

Universal Limit Switch Box Dimensions

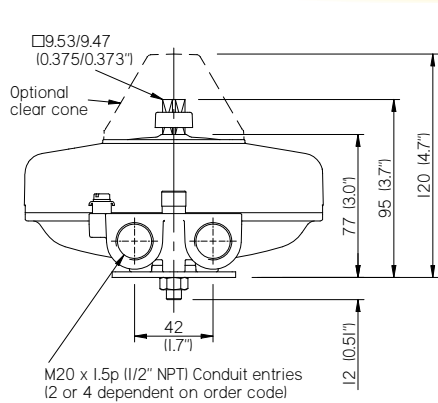


Direct Mount Option

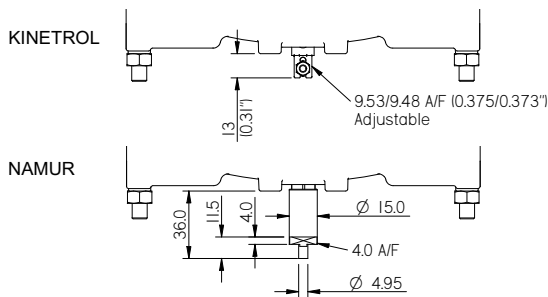
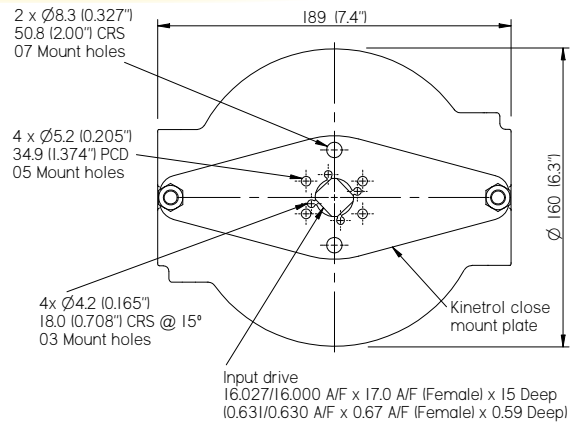


Kinetrol & Namur Discrete Mount Option

Explosion Proof Limit Switch Box Dimensions



Kinetrol Close Mount Option



Discrete Mount Option

